



OTOMOTİV SANAYİİ DERNEĐİ
AUTOMOTIVE MANUFACTURERS ASSOCIATION

OTOMOTİV SEKTÖRÜ AYLIK DEĐERLENDİRME RAPORU HAZİRAN 2018

AUTOMOTIVE INDUSTRY MONTHLY REPORT
June 2018

OSD "OICA" Üyesidir



OSD is a Member of "OICA"

	6 - 2017	6 - 2018	%	1 - 6 / 2017	1 - 6 / 2018	%	7/2016 - 6/2017	7/2017 - 6/2018	%
Otomobil Üretimi/P.Cars Production	94.838	85.635	-9,7	601.581	557.269	-7,4	1.111.103	1.098.594	-1,1
Toplam Üretim/Total Production	141.159	131.194	-7,1	869.162	843.193	-3,0	1.629.148	1.669.762	2,5
Otomobil Pazarı/P.Cars Market	66.164	41.225	-37,7	305.924	275.870	-9,8	724.380	692.705	-4,4
Toplam Pazar/Total Market	85.820	52.700	-38,6	413.520	366.487	-11,4	973.153	939.796	-3,4
Otomobil İthalatı/P.Cars Import	44.241	26.657	-39,7	210.131	183.300	-12,8	524.795	479.137	-8,7
Toplam İthalat/Total Import	53.270	31.674	-40,5	260.189	225.270	-13,4	639.398	589.568	-7,8
Otomobil İhracatı/P.Cars Export	79.544	68.030	-14,5	504.462	460.552	-8,7	909.548	877.444	-3,5
Toplam İhracat/Total Export	115.969	109.695	-5,4	714.283	688.081	-3,7	1.299.910	1.306.592	0,5
Otomobil İhracatı(\$)/P.Cars Export (\$)	1.027.847.937	962.476.086	-6,4	6.096.573.974	6.550.556.980	7,4	10.868.577.540	12.244.560.766	12,7
Toplam İhracat(\$)/Total Export (\$)*	2.552.094.816	2.600.103.999	1,9	14.588.878.997	16.769.626.734	14,9	26.897.791.161	31.274.227.095	16,3

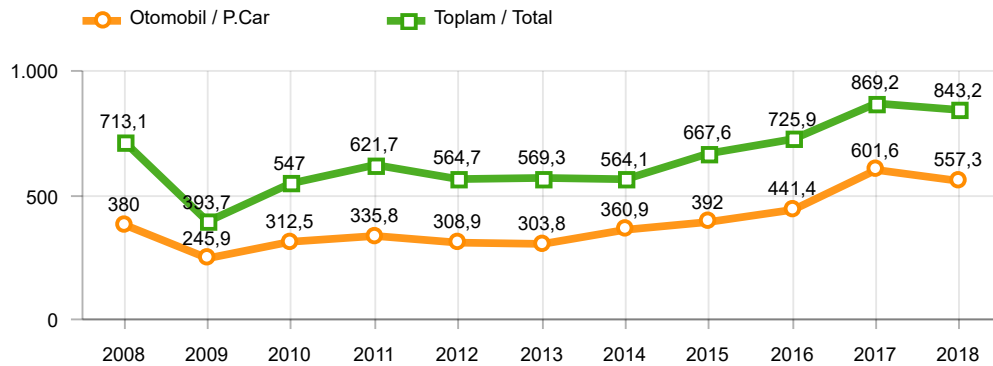
Parametreler/Parameters	6 - 2017	6 - 2018	%	1 - 6 / 2017	1 - 6 / 2018	%	7/2016 - 6/2017	7/2017 - 6/2018	%
ÜFE / PPI	0,1	3,0	-	7,8	15,5	-	10,0	16,6	-
TÜFE / CPI	-0,3	2,6	-	5,9	9,2	-	9,4	11,5	-
Sanayi Endeksi / Industry Index	0,1	3,2	-	8,2	15,2	-	11,6	17,7	-
Dolar \$ **	3,5	4,6	30,0	3,6	4,0	12,3	3,4	3,8	14,6
Euro € **	4,0	5,3	33,8	3,9	4,9	25,0	3,7	4,6	25,4
Japon Yeni ¥ **	3,1	4,1	31,7	3,2	3,7	16,2	3,1	3,5	13,8

*Toplam Sanayi / Total Industry Including Components

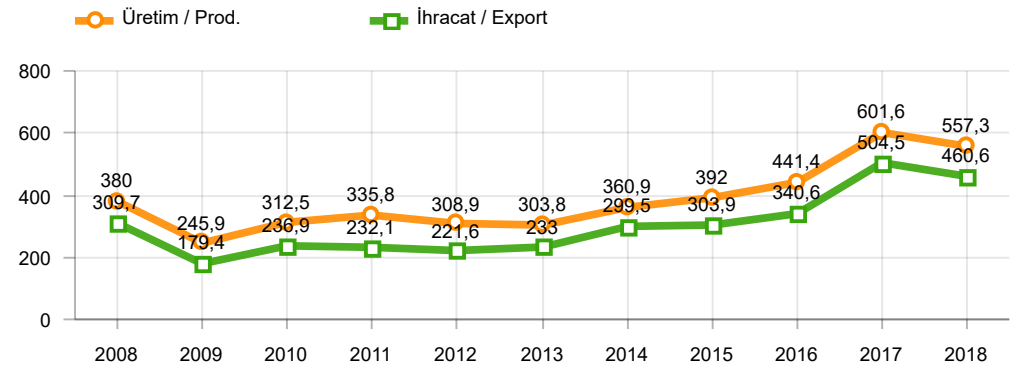
** Ortalama Değerler / Average Values

Araç Tipleri / Types	6 / 2017	6 / 2018	6 % Değişim	1-6 / 2017	1-6 / 2018	1-6 % Değişim
OTOMOBİL / Pass.Car	94.838	85.635	-9,7	601.581	557.269	-7,4
OTOMOBİL Toplam / Pass.Car Total	94.838	85.635	-9,7	601.581	557.269	-7,4
B.KAMYON / H. Truck	1.715	2.260	31,8	8.516	13.309	56,3
K.KAMYON / L. Truck	289	280	-3,1	1.648	1.582	-4,0
KAMYONET / Pick Up	38.198	37.064	-3,0	224.152	236.752	5,6
OTOBÜS / Bus	720	668	-7,2	4.601	4.365	-5,1
MİNİBÜS / Minibus	5.214	5.059	-3,0	27.209	27.910	2,6
MİDİBÜS / Midibus	185	228	23,2	1.455	2.006	37,9
TİCARİ ARAÇLAR Toplam / Commercial Vehicles Total	46.321	45.559	-1,6	267.581	285.924	6,9
TAŞIT ARAÇLARI Toplam / Motor Vehicles Total	141.159	131.194	-7,1	869.162	843.193	-3,0
TRAKTÖR / F.Tractor	4.523	3.238	-28,4	25.095	25.849	3,0
TRAKTÖR Toplam / F.Tractor Total	4.523	3.238	-28,4	25.095	25.849	3,0
GENEL TOPLAM / Grand Total	145.682	134.432	-7,7	894.257	869.042	-2,8

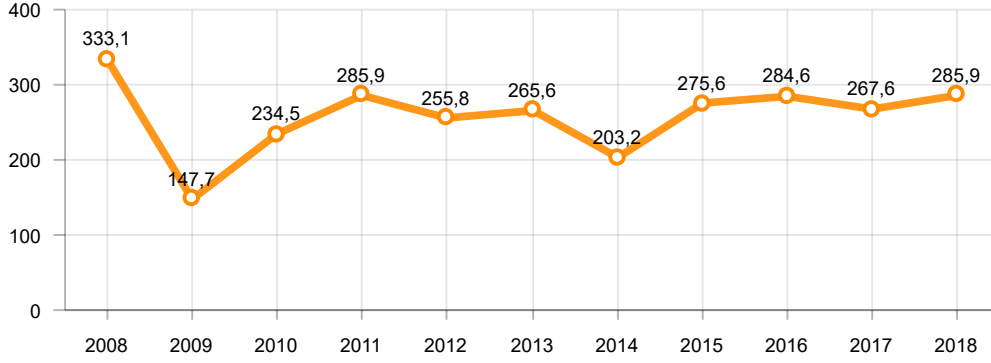
Toplam Üretim ve Otomobil Üretimi (x1000)(OCAK - HAZİRAN)
Total & P.Cars Production (x1000)(January - June)



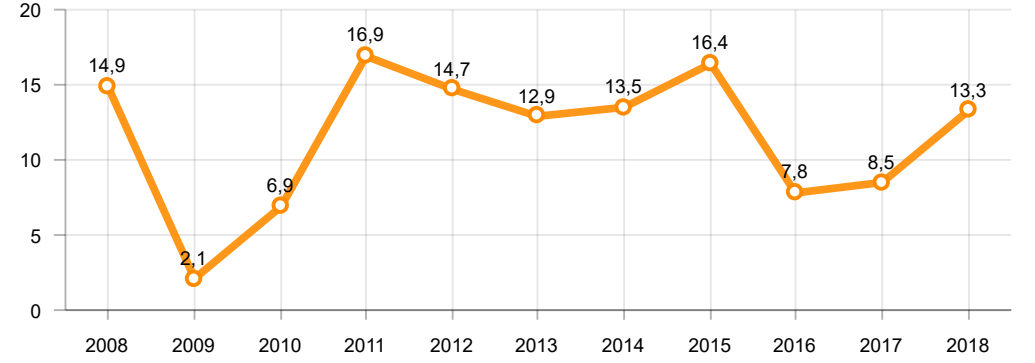
Otomobil Üretimi ve İhracat (x1000)(OCAK - HAZİRAN)
P.Cars Production & Exports (x1000)(January - June)



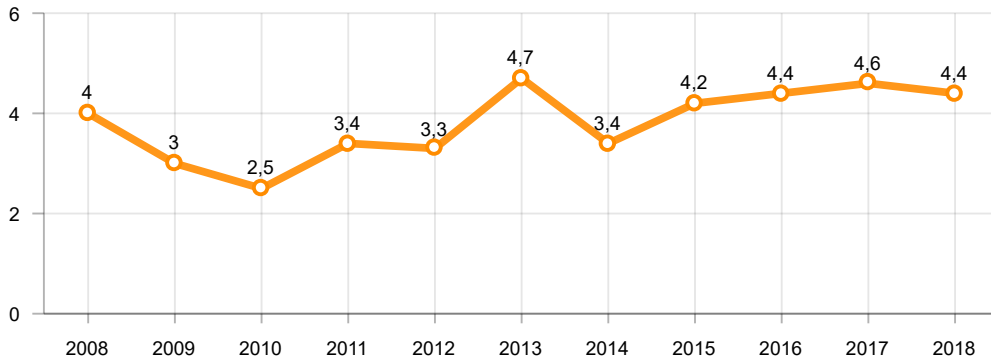
Ticari Araç Üretimi (x1000)(OCAK - HAZİRAN)
Commercial Vehicle Production (x1000)(January - June)



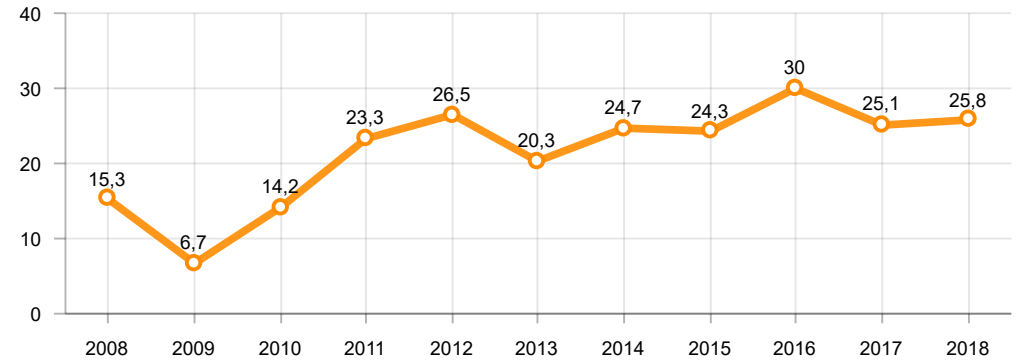
Büyük Kamyon Üretimi (x1000)(OCAK - HAZİRAN)
Heavy Truck Production (x1000)(January - June)

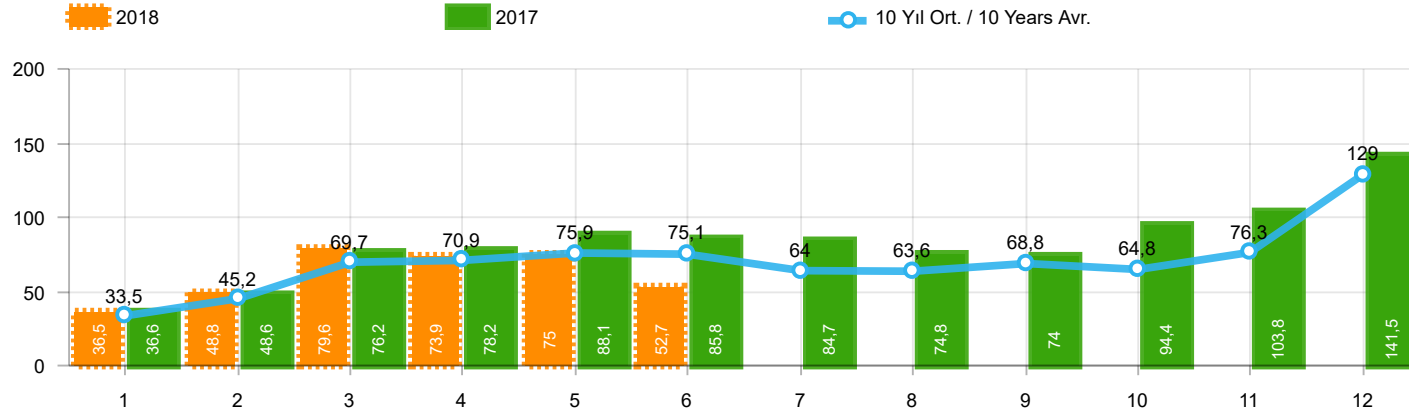


Otobüs Üretimi (x1000)(OCAK - HAZİRAN)
Bus Production (x1000)(January - June)



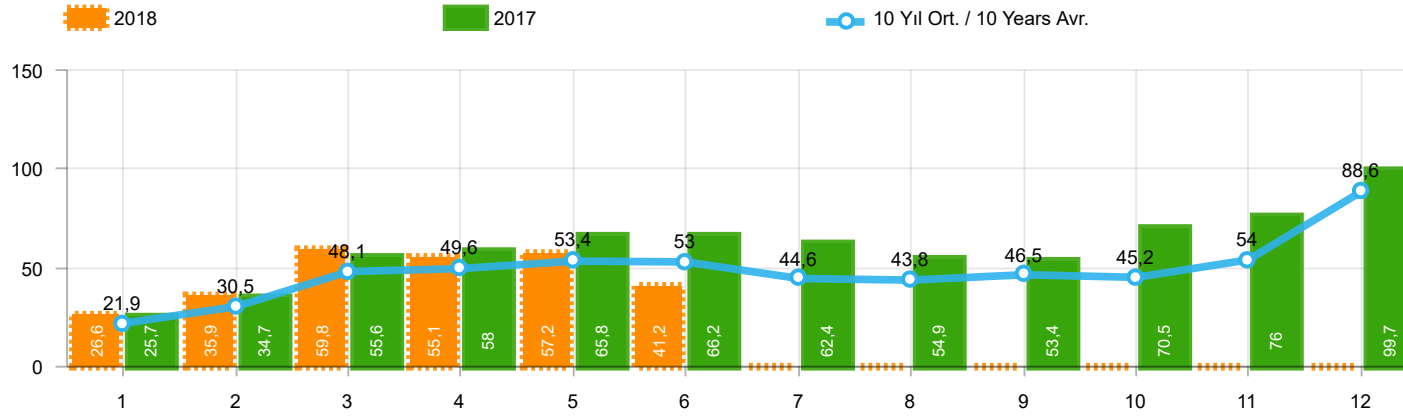
Traktör Üretimi (x1000)(OCAK - HAZİRAN)
F. Tractor Production (x1000)(January - June)





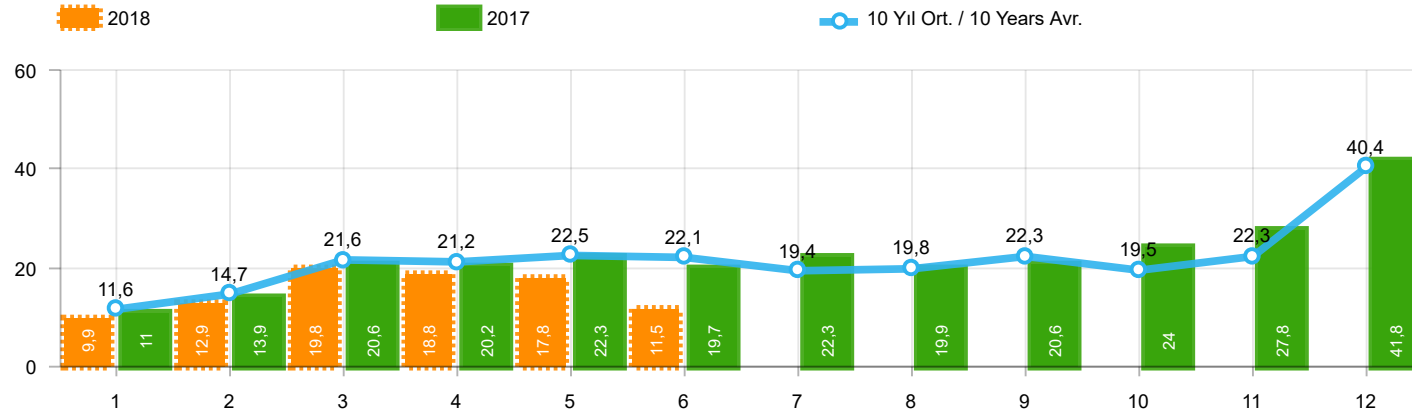
Aylar / Months	10 Yıl Ort / 10 Years Avr.	2018	%
1	33.545	36.536	8,9
2	45.155	48.769	8,0
3	69.683	79.600	14,2
4	70.861	73.886	4,3
5	75.885	74.996	-1,2
6	75.097	52.700	-29,8
TOPLAM / TOTAL	370.224	366.487	-1,0

Yıl / Year	1	2	3	4	5	6	7	8	9	10	11	12	1-6 Toplam / Total	Toplam / Total	1-6 Yerli / Local	1-6 İthal / Import	İthal Oran / Import %
2008	33.882	38.187	56.863	51.052	51.762	49.371	44.634	46.679	46.696	35.152	28.291	44.296	281.117	526.865	123.013	158.104	56,2
2009	20.605	22.873	56.527	54.433	64.947	63.090	30.374	37.038	83.553	22.191	29.309	91.762	282.475	576.702	124.342	158.133	56,0
2010	21.070	32.331	54.019	57.241	61.837	63.511	64.011	64.961	67.040	76.753	77.488	155.234	290.009	795.496	124.340	165.669	57,1
2011	47.759	62.586	84.045	82.782	85.862	85.992	65.658	61.645	64.313	73.227	67.150	134.468	449.026	915.487	181.388	267.638	59,6
2012	31.552	44.138	69.242	66.559	75.195	75.108	65.444	60.982	73.501	62.933	75.203	121.442	361.794	821.299	140.168	221.626	61,3
2013	37.563	51.133	72.943	77.265	85.835	78.043	75.152	67.662	71.388	60.690	83.470	136.048	402.782	897.192	126.686	276.096	68,5
2014	34.751	37.659	51.312	57.113	62.447	64.295	62.770	63.303	70.764	69.742	84.368	154.843	307.577	813.367	103.125	204.452	66,5
2015	37.256	59.221	89.765	96.182	85.804	91.071	87.358	85.244	67.181	67.086	88.431	164.464	459.299	1.019.063	163.138	296.161	64,5
2016	34.369	54.840	85.932	87.748	97.090	94.666	59.732	73.654	69.413	85.666	125.462	145.706	454.645	1.014.278	152.586	302.059	66,4
2017	36.640	48.585	76.178	78.231	88.066	85.820	84.727	74.818	74.046	94.439	103.772	141.507	413.520	986.829	153.331	260.189	62,9
2018	36.536	48.769	79.600	73.886	74.996	52.700							366.487	366.487	141.217	225.270	61,5



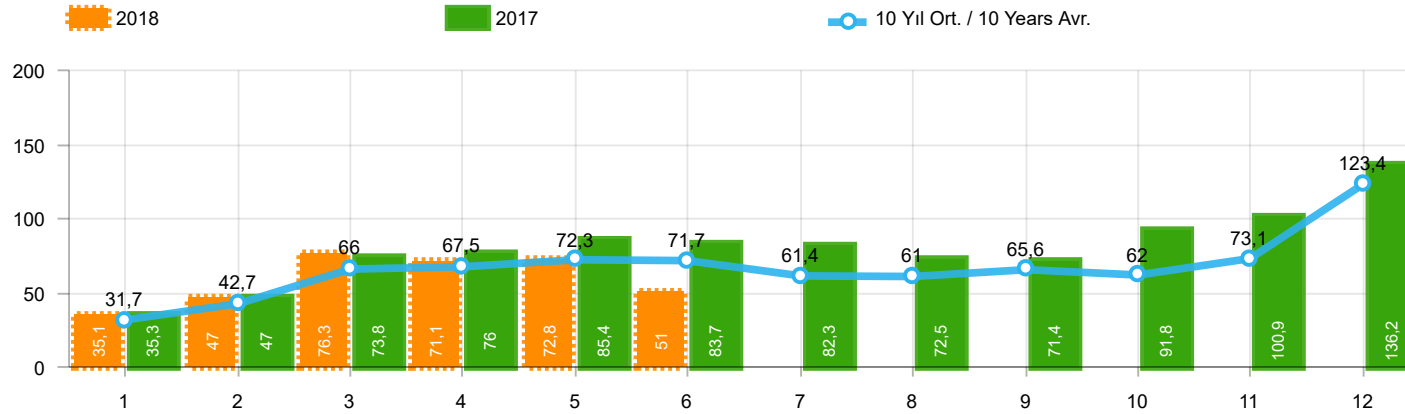
Aylar / Months	10 Yıl Ort / 10 Years Avr.	2018	%
1	21.905	26.611	21,5
2	30.458	35.901	17,9
3	48.088	59.798	24,4
4	49.614	55.108	11,1
5	53.417	57.227	7,1
6	53.000	41.225	-22,2
TOPLAM / TOTAL	256.481	275.870	7,6

Yıl / Year	1	2	3	4	5	6	7	8	9	10	11	12	1-6 Toplam / Total	Toplam / Total	1-6 Yerli / Local	1-6 İthal / Import	İthal Oran / Import %
2008	18.588	21.196	34.147	30.313	31.477	28.724	25.530	26.102	27.053	19.788	17.201	25.879	164.445	305.998	55.727	108.718	66,1
2009	13.173	14.492	40.622	36.202	44.188	41.019	16.637	22.537	52.162	13.828	17.781	57.178	189.696	369.819	64.339	125.357	66,1
2010	12.594	20.651	33.958	36.549	40.467	42.086	41.399	42.222	42.477	47.859	50.061	99.461	186.305	509.784	59.686	126.619	68,0
2011	29.868	39.004	54.023	53.835	56.302	56.714	43.518	38.875	39.964	47.508	44.951	88.957	289.746	593.519	89.601	200.145	69,1
2012	21.077	29.189	47.270	45.645	50.460	50.849	44.531	41.236	49.360	43.440	52.297	80.926	244.490	556.280	69.994	174.496	71,4
2013	25.835	36.814	51.785	56.999	62.383	58.290	55.712	51.611	52.925	46.985	64.117	101.199	292.106	664.655	63.686	228.420	78,2
2014	24.368	27.167	37.812	42.769	46.379	47.278	46.602	45.131	49.262	50.814	59.695	110.054	225.773	587.331	56.924	168.849	74,8
2015	24.498	40.817	61.676	70.211	62.878	67.766	64.218	61.753	47.088	47.954	62.397	114.340	327.846	725.596	83.639	244.207	74,5
2016	23.358	40.588	63.975	65.618	73.832	71.111	45.566	53.977	51.340	63.746	95.783	108.044	338.482	756.938	88.101	250.381	74,0
2017	25.689	34.658	55.616	57.998	65.799	66.164	62.384	54.890	53.423	70.488	75.956	99.694	305.924	722.759	95.793	210.131	68,7
2018	26.611	35.901	59.798	55.108	57.227	41.225							275.870	275.870	92.570	183.300	66,4



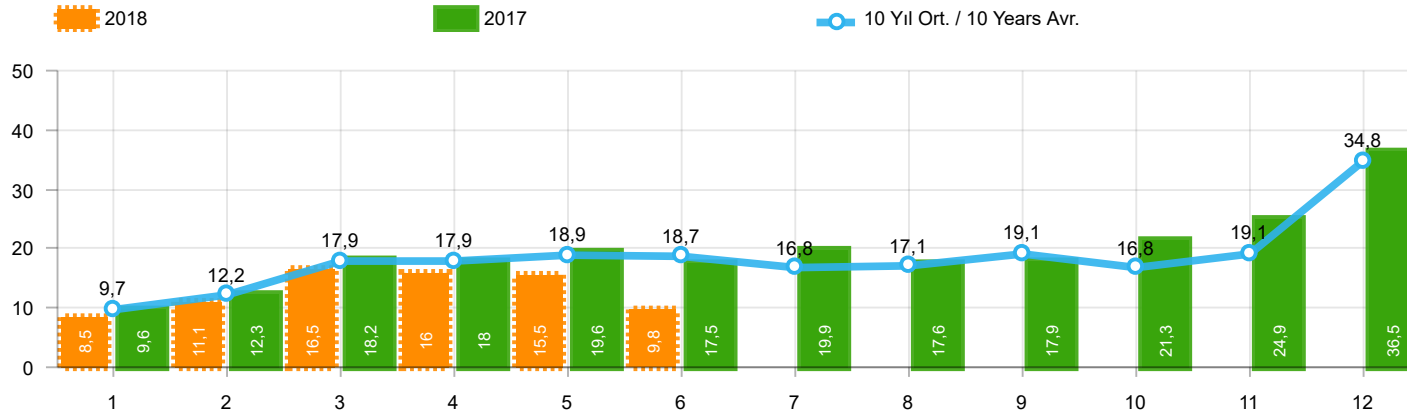
Aylar / Months	10 Yıl Ort / 10 Years Avr.	2018	%
1	11.640	9.925	-14,7
2	14.698	12.868	-12,4
3	21.594	19.802	-8,3
4	21.247	18.778	-11,6
5	22.468	17.769	-20,9
6	22.097	11.475	-48,1
TOPLAM / TOTAL	113.743	90.617	-20,3

Yıl / Year	1	2	3	4	5	6	7	8	9	10	11	12	1-6 Toplam / Total	Toplam / Total	1-6 Yerli / Local	1-6 İthal / Import	İthal Oran / Import %
2008	15.294	16.991	22.716	20.739	20.285	20.647	19.104	20.577	19.643	15.364	11.090	18.417	116.672	220.867	67.286	49.386	42,3
2009	7.432	8.381	15.905	18.231	20.759	22.071	13.737	14.501	31.391	8.363	11.528	34.584	92.779	206.883	60.003	32.776	35,3
2010	8.476	11.680	20.061	20.692	21.370	21.425	22.612	22.739	24.563	28.894	27.427	55.773	103.704	285.712	64.654	39.050	37,7
2011	17.891	23.582	30.022	28.947	29.560	29.278	22.140	22.770	24.349	25.719	22.199	45.511	159.280	321.968	91.787	67.493	42,4
2012	10.475	14.949	21.972	20.914	24.735	24.259	20.913	19.746	24.141	19.493	22.906	40.516	117.304	265.019	70.174	47.130	40,2
2013	11.728	14.319	21.158	20.266	23.452	19.753	19.440	16.051	18.463	13.705	19.353	34.849	110.676	232.537	63.000	47.676	43,1
2014	10.383	10.492	13.500	14.344	16.068	17.017	16.168	18.172	21.502	18.928	24.673	44.789	81.804	226.036	46.201	35.603	43,5
2015	12.758	18.404	28.089	25.971	22.926	23.305	23.140	23.491	20.093	19.132	26.034	50.124	131.453	293.467	79.499	51.954	39,5
2016	11.011	14.252	21.957	22.130	23.258	23.555	14.166	19.677	18.073	21.920	29.679	37.662	116.163	257.340	64.485	51.678	44,5
2017	10.951	13.927	20.562	20.233	22.267	19.656	22.343	19.928	20.623	23.951	27.816	41.813	107.596	264.070	57.538	50.058	46,5
2018	9.925	12.868	19.802	18.778	17.769	11.475							90.617	90.617	48.647	41.970	46,3



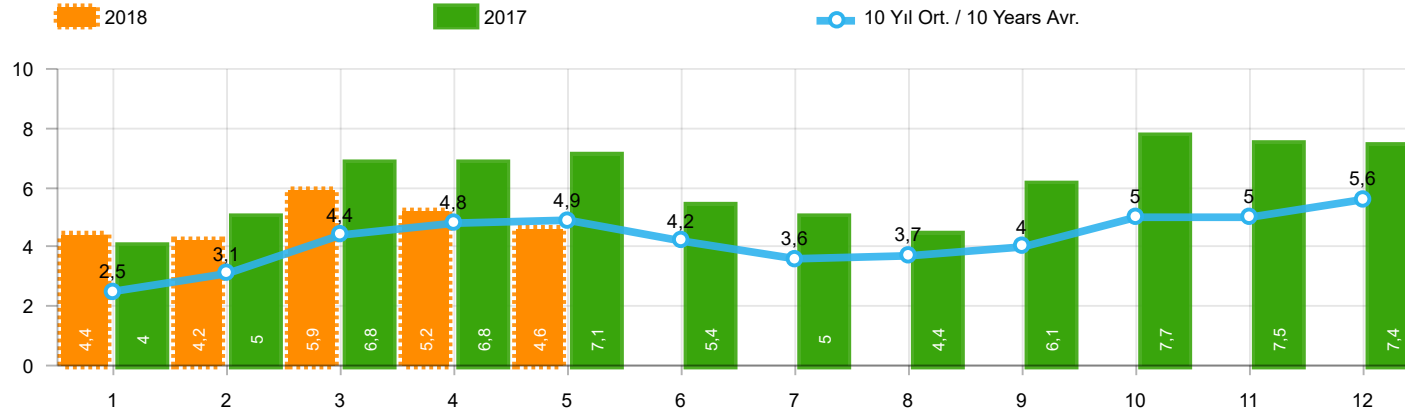
Aylar / Months	10 Yıl Ort. / 10 Years Avr.	2018	%
1	31.651	35.076	10,8
2	42.660	47.009	10,2
3	66.022	76.345	15,6
4	67.529	71.126	5,3
5	72.313	72.755	0,6
6	71.654	51.037	-28,8
TOPLAM / TOTAL	351.830	353.348	0,4

Yıl / Year	1	2	3	4	5	6	7	8	9	10	11	12	1-6 Toplam / Total	Toplam / Total	1-6 Yerli / Local	1-6 İthal / Import	İthal Oran / Import %
2008	31.527	35.251	53.649	47.701	48.598	46.324	42.156	43.670	43.932	32.884	26.253	42.078	263.050	494.023	108.441	154.609	58,8
2009	19.606	21.742	55.111	52.640	63.191	61.067	28.845	35.609	81.397	21.033	27.962	88.923	273.357	557.126	116.483	156.874	57,4
2010	20.095	31.172	51.769	54.946	59.377	60.896	61.345	61.764	63.814	73.404	73.962	148.369	278.255	760.913	115.458	162.797	58,5
2011	44.892	58.663	78.403	77.695	80.646	81.573	63.044	58.406	60.129	69.421	63.657	127.910	421.872	864.439	162.944	258.928	61,4
2012	29.545	41.324	64.884	62.949	70.863	71.067	62.304	58.148	69.629	59.938	71.710	115.400	340.632	777.761	124.724	215.908	63,4
2013	35.523	48.307	68.774	73.575	81.468	74.096	71.596	65.043	67.963	58.014	79.301	129.718	381.743	853.378	110.647	271.096	71,0
2014	32.670	35.021	47.581	53.305	58.121	60.163	59.907	60.199	66.531	66.573	80.621	146.989	286.861	767.681	87.190	199.671	69,6
2015	34.615	55.331	83.302	91.602	81.542	86.158	83.836	82.577	64.025	64.255	84.601	156.173	432.550	968.017	143.052	289.498	66,9
2016	32.713	52.825	82.948	84.887	93.904	91.540	58.533	71.556	67.593	83.000	122.309	141.912	438.817	983.720	140.957	297.860	67,9
2017	35.323	46.965	73.802	75.988	85.422	83.658	82.297	72.536	71.352	91.752	100.859	136.240	401.158	956.194	144.000	257.158	64,1
2018	35.076	47.009	76.345	71.126	72.755	51.037							353.348	353.348	132.536	220.812	62,5



Aylar / Months	10 Yıl Ort / 10 Years Avr.	2018	%
1	9.746	8.465	-13,1
2	12.203	11.108	-9,0
3	17.934	16.547	-7,7
4	17.915	16.018	-10,6
5	18.897	15.528	-17,8
6	18.654	9.812	-47,4
TOPLAM / TOTAL	95.348	77.478	-18,7

Yıl / Year	1	2	3	4	5	6	7	8	9	10	11	12	1-6 Toplam / Total	Toplam / Total	1-6 Yerli / Local	1-6 İthal / Import	İthal Oran / Import %
2008	12.939	14.055	19.502	17.388	17.121	17.600	16.626	17.568	16.879	13.096	9.052	16.199	98.605	188.025	52.714	45.891	46,5
2009	6.433	7.250	14.489	16.438	19.003	20.048	12.208	13.072	29.235	7.205	10.181	31.745	83.661	187.307	52.144	31.517	37,7
2010	7.501	10.521	17.811	18.397	18.910	18.810	19.946	19.542	21.337	25.545	23.901	48.908	91.950	251.129	55.772	36.178	39,3
2011	15.024	19.659	24.380	23.860	24.344	24.859	19.526	19.531	20.165	21.913	18.706	38.953	132.126	270.920	73.343	58.783	44,5
2012	8.468	12.135	17.614	17.304	20.403	20.218	17.773	16.912	20.269	16.498	19.413	34.474	96.142	221.481	54.730	41.412	43,1
2013	9.688	11.493	16.989	16.576	19.085	15.806	15.884	13.432	15.038	11.029	15.184	28.519	89.637	188.723	46.961	42.676	47,6
2014	8.302	7.854	9.769	10.536	11.742	12.885	13.305	15.068	17.269	15.759	20.926	36.935	61.088	180.350	30.266	30.822	50,5
2015	10.117	14.514	21.626	21.391	18.664	18.392	19.618	20.824	16.937	16.301	22.204	41.833	104.704	242.421	59.413	45.291	43,3
2016	9.355	12.237	18.973	19.269	20.072	20.429	12.967	17.579	16.253	19.254	26.526	33.868	100.335	226.782	52.856	47.479	47,3
2017	9.634	12.307	18.186	17.990	19.623	17.494	19.913	17.646	17.929	21.264	24.903	36.546	95.234	233.435	48.207	47.027	49,4
2018	8.465	11.108	16.547	16.018	15.528	9.812							77.478	77.478	39.966	37.512	48,4



Aylar / Months	10 Yıl Ort. / 10 Years Avr.	2018	%
1	2.510	4.362	73,8
2	3.127	4.179	33,7
3	4.447	5.925	33,2
4	4.833	5.216	7,9
5	4.934	4.584	-7,1
TOPLAM / TOTAL	19.851	24.266	22,2

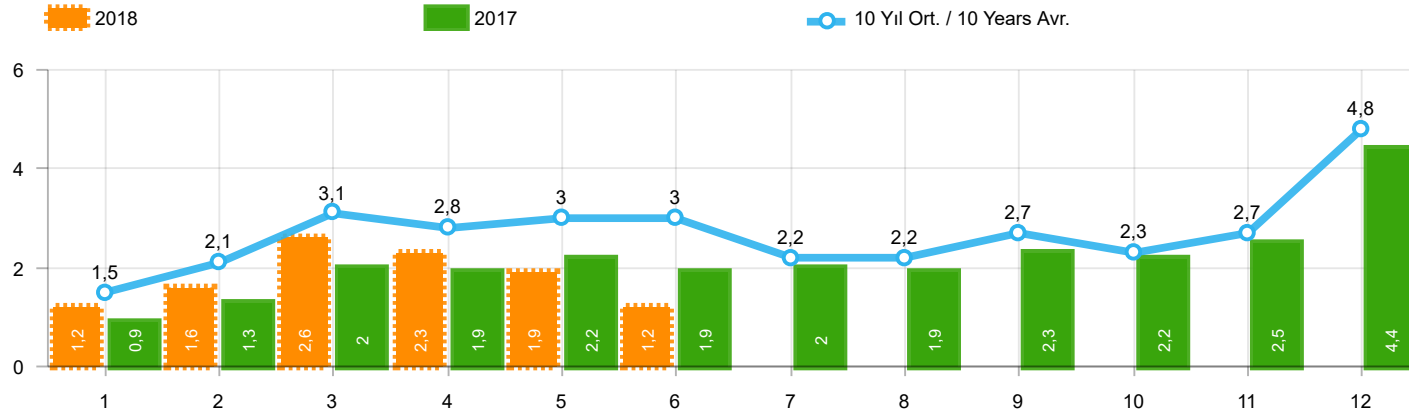
Yıl / Year	1	2	3	4	5	6	7	8	9	10	11	12	1-5 Toplam / Total	Toplam / Total
2008	2.770	1.855	3.395	3.081	2.769	2.400	2.232	2.485	1.856	1.773	1.305	1.101	13.870	27.022
2009	717	572	688	1.070	1.297	1.256	1.054	1.183	1.117	1.356	1.304	2.144	4.344	13.758
2010	1.111	1.991	2.330	3.039	2.567	2.638	1.965	3.019	2.806	4.424	3.978	6.168	11.038	36.036
2011	2.975	5.242	5.927	5.358	6.016	6.335	4.534	4.051	4.140	5.828	4.943	4.992	25.518	60.341
2012	2.362	1.983	4.348	6.579	6.273	4.569	3.837	3.158	3.618	4.027	4.807	4.757	21.545	50.318
2013	2.161	2.432	4.005	4.585	5.616	3.136	4.574	3.408	4.935	4.762	5.781	6.891	18.799	52.286
2014	2.169	3.512	4.476	4.905	5.094	5.028	4.233	4.920	5.619	5.743	6.250	7.409	20.156	59.358
2015	3.124	3.984	5.460	6.383	6.078	5.748	4.677	5.044	4.765	7.049	6.898	7.564	25.029	66.774
2016	3.739	4.731	7.067	6.546	6.575	5.543	3.833	5.134	4.945	7.372	7.090	7.603	28.658	70.178
2017	3.974	4.964	6.773	6.780	7.057	5.356	5.003	4.396	6.064	7.734	7.457	7.351	29.548	72.909
2018	4.362	4.179	5.925	5.216	4.584								24.266	24.266

Kaynak: TÜİK trafik kayıtları.

Rakamlar, son iki model yılına ait traktör tescillerinden oluşmaktadır.

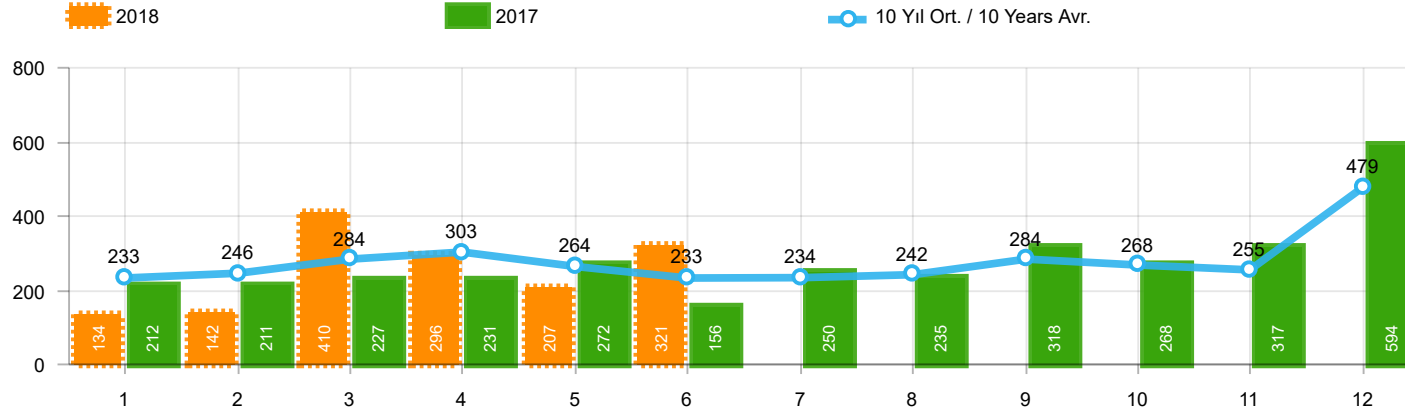
Source: Turkish Statistical Institute – Traffic registrations

Data represents the last two model year's farm tractors registration figures



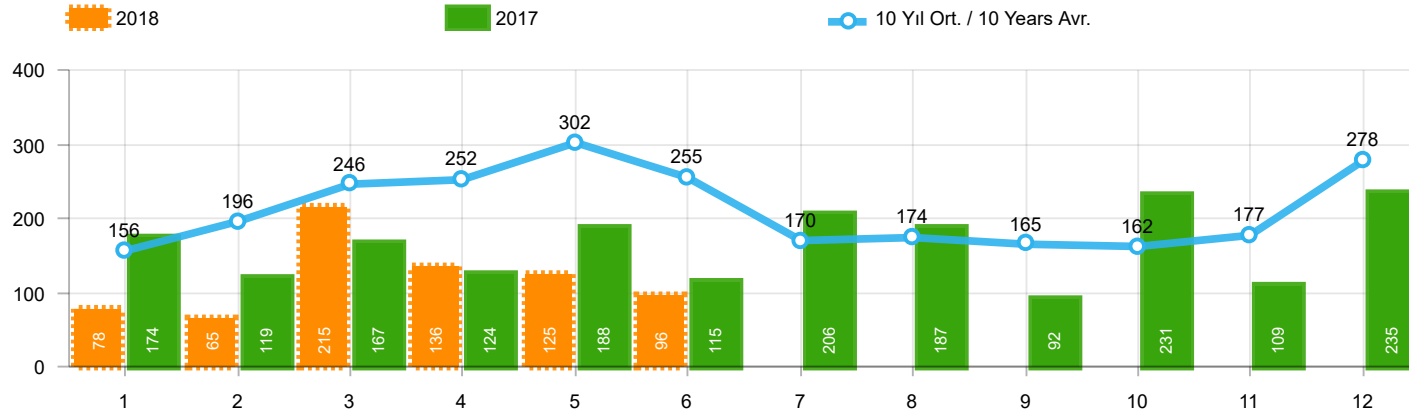
Aylar / Months	10 Yıl Ort. / 10 Years Avr.	2018	%
1	1.505	1.248	-17,1
2	2.053	1.553	-24,4
3	3.131	2.630	-16,0
4	2.777	2.328	-16,2
5	3.005	1.909	-36,5
6	2.955	1.246	-57,8
TOPLAM / TOTAL	15.426	10.914	-29,3

Yıl / Year	1	2	3	4	5	6	7	8	9	10	11	12	1-6 Toplam / Total	Toplam / Total	1-6 Yerli / Local	1-6 İthal / Import	İthal Oran / Import %
2008	1.829	2.350	2.655	2.644	2.513	2.515	2.048	2.498	2.241	1.816	1.674	1.770	14.506	26.553	11.059	3.447	23,8
2009	782	763	1.062	1.381	1.426	1.649	1.261	1.164	1.862	963	1.047	2.368	7.063	15.728	5.844	1.219	17,3
2010	768	960	1.950	1.949	2.140	2.314	2.403	2.754	2.864	3.001	3.231	6.158	10.081	30.492	7.249	2.832	28,1
2011	2.651	3.544	5.142	4.503	4.563	3.852	2.261	2.745	3.784	3.400	3.149	5.712	24.255	45.306	15.616	8.639	35,6
2012	1.703	2.454	3.866	3.209	3.678	3.540	2.750	2.403	3.296	2.497	3.154	5.300	18.450	37.850	12.758	5.692	30,9
2013	1.484	2.113	3.343	2.925	3.504	3.186	2.777	2.103	2.875	2.086	3.631	5.444	16.555	35.471	11.564	4.991	30,1
2014	1.522	2.065	3.094	3.224	3.727	3.726	2.578	2.783	3.708	2.858	3.384	6.869	17.358	39.538	12.720	4.638	26,7
2015	2.215	3.346	5.699	3.729	3.600	4.253	2.922	2.211	2.687	2.266	3.146	7.307	22.842	43.381	16.240	6.602	28,9
2016	1.167	1.648	2.515	2.319	2.711	2.623	984	1.796	1.438	2.238	2.485	3.127	12.983	25.051	8.815	4.168	32,1
2017	931	1.290	1.982	1.888	2.184	1.891	1.974	1.860	2.284	2.188	2.487	4.438	10.166	25.397	7.147	3.019	29,7
2018	1.248	1.553	2.630	2.328	1.909	1.246							10.914	10.914	6.467	4.447	40,7



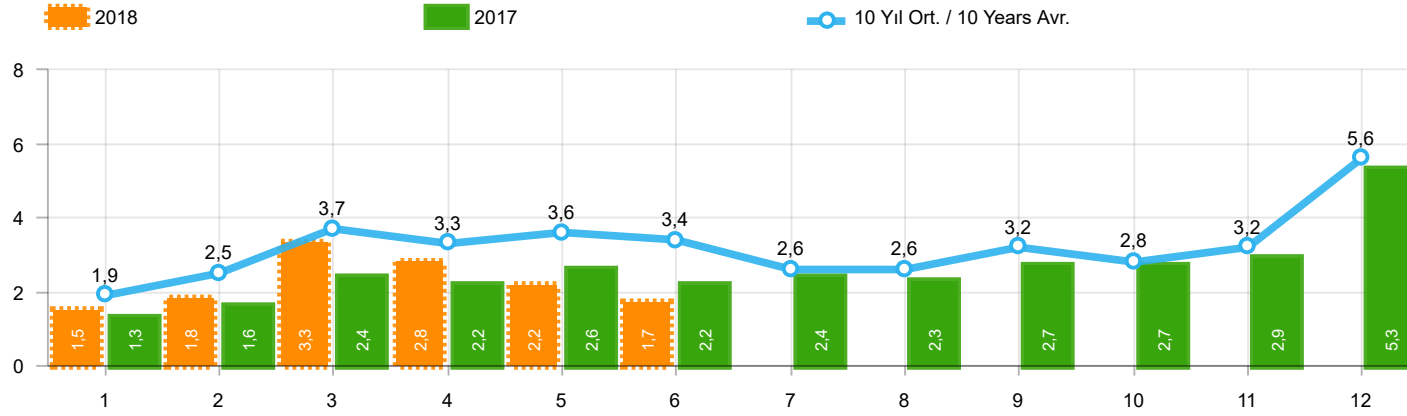
Aylar / Months	10 Yıl Ort / 10 Years Avr.	2018	%
1	233	134	-42,5
2	246	142	-42,3
3	284	410	44,6
4	303	296	-2,4
5	264	207	-21,7
6	233	321	37,9
TOPLAM / TOTAL	1.563	1.510	-3,4

Yıl / Year	1	2	3	4	5	6	7	8	9	10	11	12	1-6 Toplam / Total	Toplam / Total
2008	401	453	365	477	392	292	323	344	316	334	205	208	2.380	4.110
2009	133	103	153	210	145	183	138	146	152	134	150	280	927	1.927
2010	140	128	172	153	127	124	93	232	199	204	162	382	844	2.116
2011	124	167	267	260	241	233	205	280	270	230	168	525	1.292	2.970
2012	179	257	277	229	257	239	216	249	325	269	189	398	1.438	3.084
2013	191	268	289	276	283	241	367	235	305	392	415	697	1.548	3.959
2014	360	394	384	333	294	258	216	229	395	220	266	653	2.023	4.002
2015	280	322	451	561	372	405	389	253	316	394	325	621	2.391	4.689
2016	309	158	251	302	261	196	139	220	241	230	354	431	1.477	3.092
2017	212	211	227	231	272	156	250	235	318	268	317	594	1.309	3.291
2018	134	142	410	296	207	321							1.510	1.510



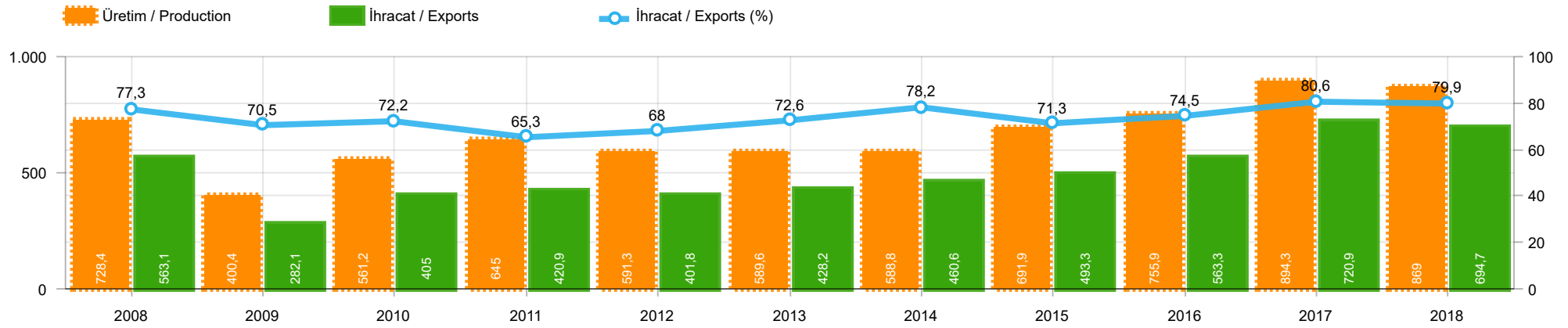
Aylar / Months	10 Yıl Ort. / 10 Years Avr.	2018	%
1	156	78	-49,9
2	196	65	-66,8
3	246	215	-12,6
4	252	136	-45,9
5	302	125	-58,7
6	255	96	-62,3
TOPLAM / TOTAL	1.406	715	-49,2

Yıl / Year	1	2	3	4	5	6	7	8	9	10	11	12	1-6 Toplam / Total	Toplam / Total	1-6 Yerli / Local	1-6 İthal / Import	İthal Oran / Import %
2008	125	133	194	230	259	240	107	167	207	118	159	240	1.181	2.179	1.133	48	4,1
2009	84	265	201	202	185	191	130	119	142	61	150	191	1.128	1.921	1.088	40	3,5
2010	67	71	128	193	193	177	170	211	163	144	133	325	829	1.975	789	40	4,8
2011	92	212	233	324	412	334	148	214	130	176	176	321	1.607	2.772	1.536	71	4,4
2012	125	103	215	172	397	262	174	182	251	229	150	344	1.274	2.604	1.248	26	2,0
2013	365	445	537	489	580	520	412	281	245	198	123	189	2.936	4.384	2.927	9	0,3
2014	199	179	253	251	305	148	69	92	130	91	97	332	1.335	2.146	1.192	143	10,7
2015	146	222	313	290	290	255	211	203	153	171	359	363	1.516	2.976	1.455	61	4,0
2016	180	209	218	240	214	307	76	82	141	198	314	236	1.368	2.415	1.337	31	2,3
2017	174	119	167	124	188	115	206	187	92	231	109	235	887	1.947	875	12	1,4
2018	78	65	215	136	125	96							715	715	704	11	1,5



Aylar / Months	10 Yıl Ort / 10 Years Avr.	2018	%
1	1.894	1.460	-22,9
2	2.495	1.760	-29,5
3	3.660	3.255	-11,1
4	3.332	2.760	-17,2
5	3.571	2.241	-37,2
6	3.443	1.663	-51,7
TOPLAM / TOTAL	18.395	13.139	-28,6

Yıl / Year	1	2	3	4	5	6	7	8	9	10	11	12	1-6 Toplam / Total	Toplam / Total	1-6 Yerli / Local	1-6 İthal / Import	İthal Oran / Import %
2008	2.355	2.936	3.214	3.351	3.164	3.047	2.478	3.009	2.764	2.268	2.038	2.218	18.067	32.842	14.572	3.495	19,3
2009	999	1.131	1.416	1.793	1.756	2.023	1.529	1.429	2.156	1.158	1.347	2.839	9.118	19.576	7.859	1.259	13,8
2010	975	1.159	2.250	2.295	2.460	2.615	2.666	3.197	3.226	3.349	3.526	6.865	11.754	34.583	8.882	2.872	24,4
2011	2.867	3.923	5.642	5.087	5.216	4.419	2.614	3.239	4.184	3.806	3.493	6.558	27.154	51.048	18.444	8.710	32,1
2012	2.007	2.814	4.358	3.610	4.332	4.041	3.140	2.834	3.872	2.995	3.493	6.042	21.162	43.538	15.444	5.718	27,0
2013	2.040	2.826	4.169	3.690	4.367	3.947	3.556	2.619	3.425	2.676	4.169	6.330	21.039	43.814	16.039	5.000	23,8
2014	2.081	2.638	3.731	3.808	4.326	4.132	2.863	3.104	4.233	3.169	3.747	7.854	20.716	45.686	15.935	4.781	23,1
2015	2.641	3.890	6.463	4.580	4.262	4.913	3.522	2.667	3.156	2.831	3.830	8.291	26.749	51.046	20.086	6.663	24,9
2016	1.656	2.015	2.984	2.861	3.186	3.126	1.199	2.098	1.820	2.666	3.153	3.794	15.828	30.558	11.629	4.199	26,5
2017	1.317	1.620	2.376	2.243	2.644	2.162	2.430	2.282	2.694	2.687	2.913	5.267	12.362	30.635	9.331	3.031	24,5
2018	1.460	1.760	3.255	2.760	2.241	1.663							13.139	13.139	8.681	4.458	33,9



	2008	2009	2010	2011	2012	2013	2014	2015	2016	2017	2018
İhracat/Export	563.104	282.136	404.957	420.850	401.791	428.208	460.644	493.268	563.286	720.907	694.667
Üretim/Production	728.439	400.360	561.225	644.956	591.263	589.623	588.753	691.907	755.920	894.257	869.042
İhracat/Exports (%)	77,3	70,5	72,2	65,3	68	72,6	78,2	71,3	74,5	80,6	79,9

Taşıt Araçları İhracatı (2016 - 2018)
Motor Vehicle Exports (2016 - 2018)

SEKTÖR / SECTOR	2016	2017	1/6-2017	1/6-2018	2018/2017 %
OTOMOBİL / Pass.Car	745.709	921.354	504.462	460.552	-8,7
OTOMOBİL TOPLAM / Pass. Car Total	745.709	921.354	504.462	460.552	-8,7
KAMYON / Truck	5.521	7.800	3.739	6.155	64,6
KAMYONET / Pick Up	347.949	350.108	178.819	195.519	9,3
OTOBÜS / Bus	6.498	7.028	3.536	3.625	2,5
MİNİBÜS / Minibus	34.790	45.794	23.420	21.899	-6,5
MİDİBÜS / Midibus	915	710	307	331	7,8
TİCARİ ARAÇLAR TOPLAM / Commercial Vehicle Total	395.673	411.440	209.821	227.529	8,4
TAŞIT ARAÇLARI TOPLAM / Motor Vehicles Total	1.141.382	1.332.794	714.283	688.081	-3,7
TRAKTÖR / F.Tractor	13.651	13.123	6.624	6.586	-0,6
TRAKTÖR TOPLAM / F.Tractor Total	13.651	13.123	6.624	6.586	-0,6
GENEL TOPLAM / GRAND TOTAL	1.155.033	1.345.917	720.907	694.667	-3,6

Üretici Bazında İhracat (adet)
Exports by Manufacturer (unit)

Üreticiler / Manufacturers	2016	2017	1-6 / 2017	1-6 / 2018
A.I.O.S.	673	700	246	382
FORD OTOSAN	256.706	296.840	151.990	165.131
HATTAT TRAKTÖR	1.026	1.100	575	288
HONDA TÜRKİYE	2.914	9.391	4.606	8.680
HYUNDAI ASSAN	207.234	204.382	106.982	98.346
KARSAN	3.629	2.969	1.098	1.714
M. BENZ TÜRK	8.307	9.865	5.283	7.239
MAN TÜRKİYE	1.717	2.007	1.071	1.322
OTOKAR	833	691	298	215
OYAK RENAULT	270.088	287.915	157.601	147.119
TEMSA	653	870	351	173
TOFAŞ	279.444	270.698	153.448	140.291
TOYOTA	109.184	246.466	131.309	117.469
TÜRK TRAKTÖR	12.625	12.023	6.049	6.298
GENEL TOPLAM / Grand Total	1.155.033	1.345.917	720.907	694.667

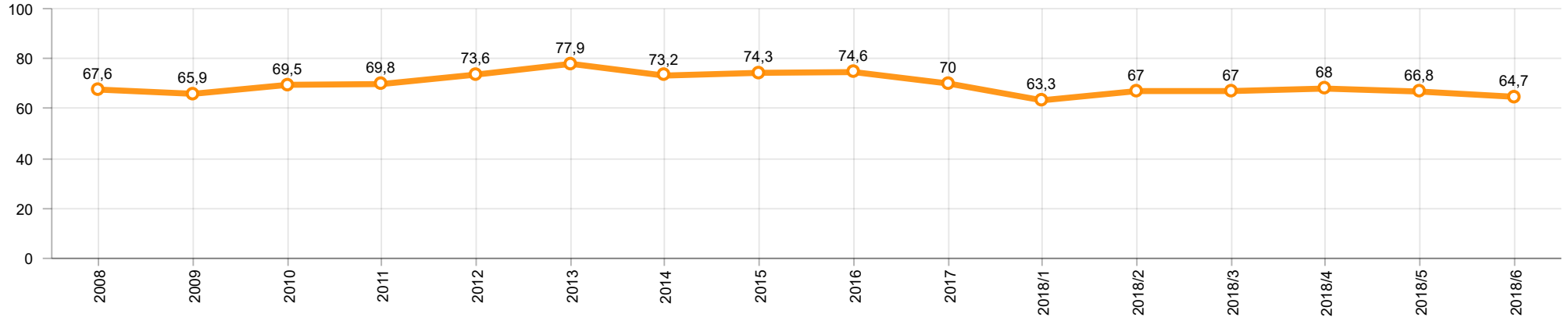
Otomotiv Ana ve Yan Sanayii İhracatı (ABD \$)
CBU and CKD Exports - \$

Sektör / Sector	2016	2017	OCAK - HAZİRAN / January - June 2017	OCAK - HAZİRAN / January - June 2018	2018 / 2017 %
Toplam Yan Sanayi / Total Component Industry	8.946.472.202	9.838.541.338	4.731.478.629	5.758.565.729	21,7
İç ve Dış Lastik / Tyres	978.124.241	1.131.881.119	541.233.553	695.703.018	28,5
Emniyet Camı / Safety Glasses	119.553.098	136.486.808	66.705.066	79.882.713	19,8
Motor / Engine	370.418.066	486.426.738	234.487.533	343.468.587	46,5
Akümülatör / Batteries	224.588.995	296.139.813	114.385.587	164.604.967	43,9
Diğer Aksam ve Parça / Spare Parts&Components	7.253.787.802	7.787.606.860	3.774.666.890	4.474.906.444	18,6
Toplam Ana Sanayi / Total Vehicle Industry	15.302.656.887	19.147.991.647	9.857.400.368	11.011.061.005	11,7
Otobüs / Bus	1.190.475.986	1.311.098.736	631.760.625	692.766.914	9,7
Midibüs-Minibüs / Midibus-Minibus	238.911.957	217.704.499	135.024.324	114.227.554	-15,4
Otomobil / P.Cars	8.336.928.418	11.790.776.093	6.096.573.974	6.550.556.980	7,4
Kamyon-Kamyonet / Truck-Pick Up&Van	4.617.147.751	4.849.465.868	2.450.031.735	2.839.307.744	15,9
Römork ve Yarı Römork / Trailer-Semi Trailer	265.338.366	230.168.223	164.597.066	244.035.537	48,3
Çekici / Tractor	316.355.575	427.967.083	221.893.037	399.066.921	79,8
Tarım Traktörü / Farm Tractor	337.498.834	320.811.145	157.519.607	171.099.355	8,6
Toplam / Total	24.249.129.089	28.986.532.985	14.588.878.997	16.769.626.734	14,9

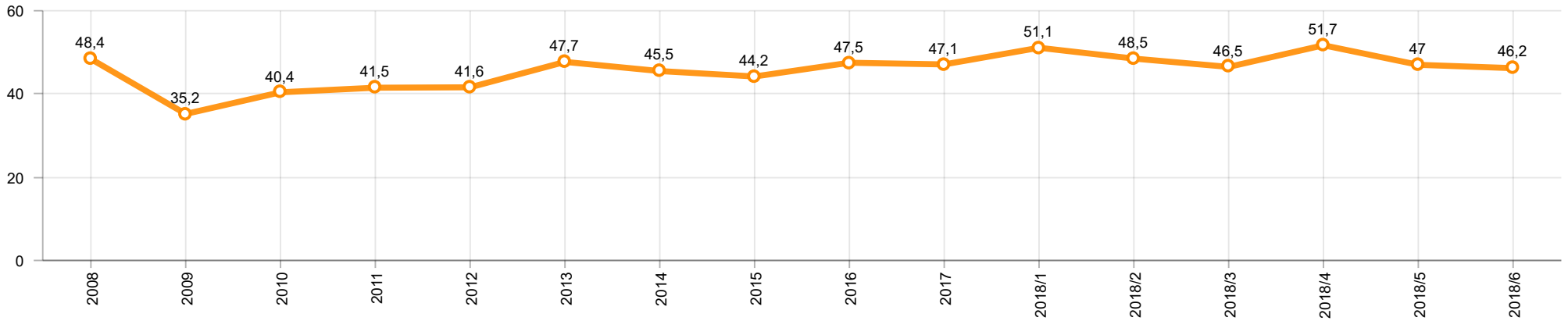
Kaynak: Uludağ İhracatçı Birlikleri . ÜİB tarafından OSD için özel olarak analiz edilen Otomotiv İhracatı kapsamında; ÜİB Türkiye Geneli Otomotiv Endüstrisi sınıflandırmasına kıyasla “Römork ve Yarı Römork” , “Tarım Traktörü” verileri dahil edilmekte; “Kullanılmış Araçlar” ,”İki Tekerlekli Taşıtlar” , “Demiryolu Taşıtları” hariç tutulmaktadır.

Source: Uludağ Exporters Association – Special Analyze for OSD.Compared to Turkish General Automotive Industry classification, this special analyze includes; farms tractors, trailers and semi-trailers, does not include; used vehicles, two-wheeled vehicles and railway vehicles

Otomobil Pazarında İthalatın Payı (%)
Import Share in P.Car Market (%)



Hafif Ticari Araçlar Pazarında İthalatın Payı (%)
Import Share in LCV Market (%)



Araç Tipleri / Vehicle Types	1	2	3	4	5	6	7	8	9	10	11	12	Toplam / Total
OTOMOBİL - Pass.Car	73.408	75.779	86.252	79.786	77.297	68.030							460.552
KAMYON - H. Truck	636	999	1.203	1.082	967	1.268							6.155
KAMYONET - Pick Up	18.119	39.567	36.823	31.215	34.735	35.060							195.519
OTOBÜS - Bus	490	486	715	594	728	612							3.625
MİNİBÜS - Minibus	1.649	4.521	3.947	4.352	2.777	4.653							21.899
MİDİBÜS - Midibus	13	50	89	58	49	72							331
TİCARİ ARAÇLAR TOPLAMI - CV Total	20.907	45.623	42.777	37.301	39.256	41.665							227.529
TAŞIT ARAÇLARI TOPLAMI - MV Total	94.315	121.402	129.029	117.087	116.553	109.695							688.081
TRAKTÖR - F.Tractor	802	941	1.155	1.108	1.410	1.170							6.586
GENEL TOPLAM - Grand Total	95.117	122.343	130.184	118.195	117.963	110.865							694.667

Otomobil / P.Car

Firmalar / Firms	1	2	3	4	5	6	7	8	9	10	11	12	Toplam / Total
FORD OTOSAN	2.920	2.041	1.787	40	1.154	1.629	-	-	-	-	-	-	9.571
HONDA TÜRKİYE	1.251	2.300	814	1.430	1.523	1.362	-	-	-	-	-	-	8.680
HYUNDAI ASSAN	10.899	17.471	18.914	17.307	17.265	16.490	-	-	-	-	-	-	98.346
OYAK RENAULT	27.028	20.491	24.760	25.707	28.043	21.090	-	-	-	-	-	-	147.119
TOFAŞ	9.736	15.502	16.864	13.195	12.558	11.512	-	-	-	-	-	-	79.367
TOYOTA	21.574	17.974	23.113	22.107	16.754	15.947	-	-	-	-	-	-	117.469
TOPLAM - Total	73.408	75.779	86.252	79.786	77.297	68.030	-	-	-	-	-	-	460.552

Kamyonet / Pick-up

Firmalar / Firms	1	2	3	4	5	6	7	8	9	10	11	12	Toplam / Total
FORD OTOSAN	12.083	28.583	25.185	20.777	23.089	23.358	-	-	-	-	-	-	133.075
KARSAN	194	271	318	270	179	282	-	-	-	-	-	-	1.514
OTOKAR	-	6	-	-	-	-	-	-	-	-	-	-	6
TOFAŞ	5.842	10.707	11.320	10.168	11.467	11.420	-	-	-	-	-	-	60.924
TOPLAM - Total	18.119	39.567	36.823	31.215	34.735	35.060	-	-	-	-	-	-	195.519

Minibüs / Minibus

Firmalar / Firms	1	2	3	4	5	6	7	8	9	10	11	12	Toplam / Total
FORD OTOSAN	1.597	4.521	3.922	4.351	2.776	4.648	-	-	-	-	-	-	21.815
KARSAN	52	-	25	1	1	5	-	-	-	-	-	-	84
TOPLAM - Total	1.649	4.521	3.947	4.352	2.777	4.653	-	-	-	-	-	-	21.899

Kamyon / Truck

Firmalar / Firms	1	2	3	4	5	6	7	8	9	10	11	12	Toplam / Total
A.I.O.S.	-	-	-	-	-	6	-	-	-	-	-	-	6
FORD OTOSAN	70	99	138	88	106	169	-	-	-	-	-	-	670
KARSAN	-	-	-	-	-	-	-	-	-	-	-	-	-
M. BENZ TÜRK	566	900	1.065	994	861	1.093	-	-	-	-	-	-	5.479
OTOKAR	-	-	-	-	-	-	-	-	-	-	-	-	-
TOPLAM - Total	636	999	1.203	1.082	967	1.268	-	-	-	-	-	-	6.155

Midibüs / Midibus

Firmalar / Firms	1	2	3	4	5	6	7	8	9	10	11	12	Toplam / Total
A.I.O.S.	6	32	54	37	20	53	-	-	-	-	-	-	202
KARSAN	1	3	1	1	-	3	-	-	-	-	-	-	9
OTOKAR	4	15	27	15	15	12	-	-	-	-	-	-	88
TEMSA	2	-	7	5	14	4	-	-	-	-	-	-	32
TOPLAM - Total	13	50	89	58	49	72	-	-	-	-	-	-	331

Otobüs / Bus

Firmalar / Firms	1	2	3	4	5	6	7	8	9	10	11	12	Toplam / Total
A.I.O.S.	3	2	39	24	47	59	-	-	-	-	-	-	174
KARSAN	1	-	23	-	31	52	-	-	-	-	-	-	107
M. BENZ TÜRK	220	238	373	311	359	259	-	-	-	-	-	-	1.760
MAN TÜRKİYE	243	212	233	228	228	178	-	-	-	-	-	-	1.322
OTOKAR	19	19	27	8	22	26	-	-	-	-	-	-	121
TEMSA	4	15	20	23	41	38	-	-	-	-	-	-	141
TOPLAM - Total	490	486	715	594	728	612	-	-	-	-	-	-	3.625

Traktör / F.Tractor

Firmalar / Firms	1	2	3	4	5	6	7	8	9	10	11	12	Toplam / Total
HATTAT TRAKTÖR	1	24	45	49	60	109	-	-	-	-	-	-	288
TÜRK TRAKTÖR	801	917	1.110	1.059	1.350	1.061	-	-	-	-	-	-	6.298
TOPLAM - Total	802	941	1.155	1.108	1.410	1.170	-	-	-	-	-	-	6.586

Firmalar / Firms	2017 Toplam / Total	1	2	3	4	5	6	7	8	9	10	11	12	Toplam / Total
Alfa Romeo	320	5	14	13	32	25	10	-	-	-	-	-	-	99
Aston Martin	25	1	1	1	1	1	1	-	-	-	-	-	-	6
Audi	21.585	1.013	1.033	1.552	1.625	1.630	668	-	-	-	-	-	-	7.521
Bentley	16	-	3	-	-	1	1	-	-	-	-	-	-	5
BMW	19.564	626	1.003	1.586	1.270	1.910	1.386	-	-	-	-	-	-	7.781
Citroen	14.709	407	1.128	1.086	615	980	499	-	-	-	-	-	-	4.715
Dacia	41.914	937	1.298	3.600	3.199	3.193	2.254	-	-	-	-	-	-	14.481
DS	119	-	-	81	20	9	9	-	-	-	-	-	-	119
Ferrari	16	1	1	2	3	1	1	-	-	-	-	-	-	9
Fiat	2.157	56	102	142	130	178	139	-	-	-	-	-	-	747
Ford	33.671	920	1.440	2.638	2.506	2.803	2.016	-	-	-	-	-	-	12.323
Honda	7.250	207	189	469	646	588	451	-	-	-	-	-	-	2.550
Hyundai	26.841	1.282	1.734	2.376	2.555	2.463	1.898	-	-	-	-	-	-	12.308
Infinity	122	3	5	2	2	2	2	-	-	-	-	-	-	16
Jaguar	339	12	20	24	18	12	8	-	-	-	-	-	-	94
Jeep	2.357	101	159	255	295	185	175	-	-	-	-	-	-	1.170
Kia	10.937	431	514	872	984	742	770	-	-	-	-	-	-	4.313
Lamborghini	7	-	-	-	1	1	-	-	-	-	-	-	-	2
Land Rover	1.879	84	145	162	129	112	93	-	-	-	-	-	-	725
Lexus	101	2	2	8	10	7	2	-	-	-	-	-	-	31
Maserati	76	4	2	6	6	4	5	-	-	-	-	-	-	27
Mazda	1.412	62	76	135	134	129	40	-	-	-	-	-	-	576
Mercedes-Benz	25.588	1.190	1.151	2.031	1.496	2.153	1.326	-	-	-	-	-	-	9.347
Mini	1.480	55	82	116	121	146	66	-	-	-	-	-	-	586
Mitsubishi	354	12	9	21	58	57	39	-	-	-	-	-	-	196
Nissan	32.043	767	1.470	2.908	2.021	2.508	1.684	-	-	-	-	-	-	11.358
Opel	44.707	1.327	1.568	2.989	3.476	1.416	1.521	-	-	-	-	-	-	12.297
Peugeot	29.981	809	1.625	3.038	2.875	3.819	1.851	-	-	-	-	-	-	14.017
Porsche	670	43	50	61	70	54	36	-	-	-	-	-	-	314
Renault	37.021	1.013	1.552	1.821	2.617	2.694	1.770	-	-	-	-	-	-	11.467
Seat	16.064	663	869	1.226	1.341	1.154	753	-	-	-	-	-	-	6.006
Skoda	24.679	1.564	2.161	2.911	2.018	1.820	1.726	-	-	-	-	-	-	12.200
Smart	105	-	-	4	4	3	5	-	-	-	-	-	-	16
Ssangyong	362	26	25	38	18	19	6	-	-	-	-	-	-	132
Subaru	1.726	86	55	224	165	144	96	-	-	-	-	-	-	770
Suzuki	4.316	67	122	323	253	383	127	-	-	-	-	-	-	1.275
Toyota	7.297	309	376	294	318	370	218	-	-	-	-	-	-	1.885
Volkswagen	89.688	2.497	3.763	6.561	5.801	5.913	4.428	-	-	-	-	-	-	28.963
Volvo	4.470	250	302	503	631	590	577	-	-	-	-	-	-	2.853
GENEL TOPLAM - Grand Total	505.968	16.832	24.049	40.079	37.464	38.219	26.657	-	-	-	-	-	-	183.300

Firmalar / Firms	2017 Toplam / Total	1	2	3	4	5	6	7	8	9	10	11	12	Toplam / Total
Citroen	8.023	94	291	706	406	634	520	-	-	-	-	-	-	2.651
Dacia	6.456	254	302	335	337	328	293	-	-	-	-	-	-	1.849
Fiat	6.582	163	252	401	249	362	223	-	-	-	-	-	-	1.650
Ford	4.188	174	142	251	247	216	214	-	-	-	-	-	-	1.244
Hyundai	2.984	119	85	28	215	199	131	-	-	-	-	-	-	777
Isuzu	302	24	18	19	19	33	34	-	-	-	-	-	-	147
Iveco	2.566	122	148	161	146	133	107	-	-	-	-	-	-	817
Kia	3.591	111	143	207	322	221	149	-	-	-	-	-	-	1.153
Mercedes-Benz	9.043	480	646	1.121	1.206	1.204	328	-	-	-	-	-	-	4.985
Mitsubishi	3.527	158	347	403	669	184	108	-	-	-	-	-	-	1.869
Nissan	2.779	95	154	197	165	116	94	-	-	-	-	-	-	821
Peugeot	10.458	178	277	485	517	404	338	-	-	-	-	-	-	2.199
Renault	16.822	512	793	1.087	1.127	969	705	-	-	-	-	-	-	5.193
Ssangyong	255	5	1	6	8	12	21	-	-	-	-	-	-	53
Toyota	4.551	210	267	310	652	352	180	-	-	-	-	-	-	1.971
Volkswagen	27.793	1.630	1.516	1.974	1.989	1.931	1.093	-	-	-	-	-	-	10.133
GENEL TOPLAM - Grand Total	109.920	4.329	5.382	7.691	8.274	7.298	4.538	-	-	-	-	-	-	37.512